

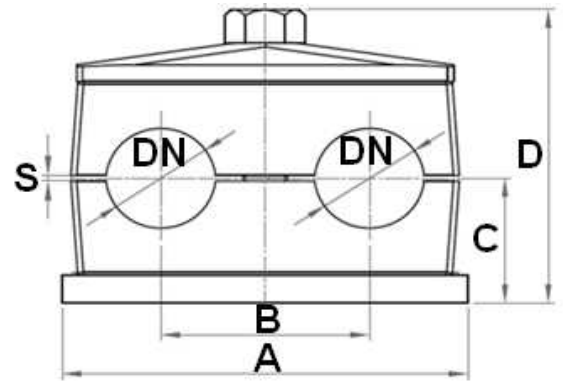
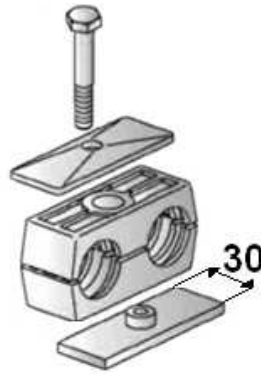
Clamps

Double clamp - parallel

Double clamp - parallel

Stainless Steel

Page: 1/1



DIN 3015/3

Part n°	DN	GROUP	A	B	C	D	S
ZAZCFS06	6	G.1	37	20	16.5	41	0.6 min
ZAZCFS08	8	G.1	37	20	16.5	41	0.6 min
ZAZCFS10	10	G.1	37	20	16.5	41	0.6 min
ZAZCFS12	12	G. 1	37	20	16.5	41	0.6 min
ZAZCFS14	14	G.2	55	29	18.5	44.5	0.7 min
ZAZCFS15	15	G. 2	55	29	18.5	44.5	0.7 min
ZAZCFS16	16	G.2	55	29	18.5	44.5	0.7 min
ZAZCFS18	18	G.2	55	29	18.5	44.5	0.7 min
ZAZCFS20	20	G.3	70	36	23.5	54.5	0.7 min
ZAZCFS22	22	G.3	70	36	23.5	54.5	0.7 min
ZAZCFS25	25	G.3	70	36	23.5	54.5	0.7 min
ZAZCFS28	28	G.4	85	45	25.5	58.5	0.7 min
ZAZCFS30	30	G.4	85	45	25.5	58.5	0.7 min
ZAZCFS35	35	G.5	110	56	32	71.5	0.7 min
ZAZCFS38	38	G.5	110	56	32	71.5	0.7 min
ZAZCFS40	40	G.5	110	56	32	71.5	0.7 min
ZAZCFS42	42	G.5	110	56	32	71.5	0.7 min